

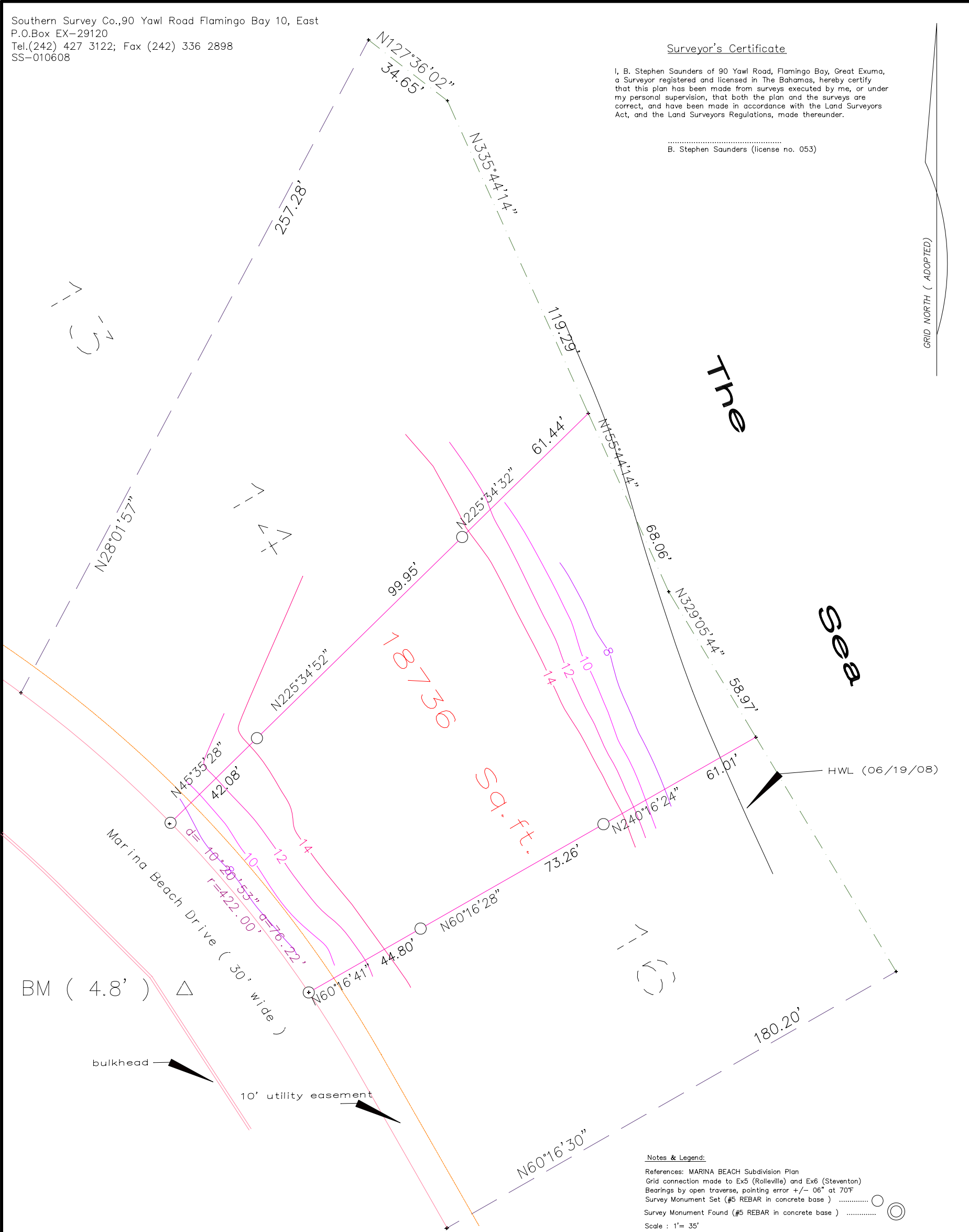
Southern Survey Co., 90 Yawl Road Flamingo Bay 10, East
P.O.Box EX-29120
Tel.(242) 427 3122; Fax (242) 336 2898
SS-010608

Surveyor's Certificate

I, B. Stephen Saunders of 90 Yawl Road, Flamingo Bay, Great Exuma, a Surveyor registered and licensed in The Bahamas, hereby certify that this plan has been made from surveys executed by me, or under my personal supervision, that both the plan and the surveys are correct, and have been made in accordance with the Land Surveyors Act, and the Land Surveyors Regulations, made thereunder.

B. Stephen Saunders (license no. 053)

GRID NORTH (ADOPTED)



Notes & Legend:

References: MARINA BEACH Subdivision Plan
Grid connection made to Ex5 (Rolleville) and Ex6 (Steventon)
Bearings by open traverse, pointing error +/- 06" at 70F
Survey Monument Set (#5 REBAR in concrete base) ○
Survey Monument Found (#5 REBAR in concrete base) ⊙
Scale : 1" = 35'

Relief PLAN
SHOWING

Lot 15, Marina Beach Subdivision containing 18 736 sq. ft.

SITUATE

ON THE EASTERN SIDE OF MARINA BEACH DRIVE, EMERALD BAY HOTEL DEVELOPMENT, OCEAN BIGHT, FARMER'S HILL
ON THE ISLAND OF

GREAT EXUMA – THE BAHAMAS

PREPARED AT THE INSTANCE OF BOB BROWNING

JUNE, 2008

